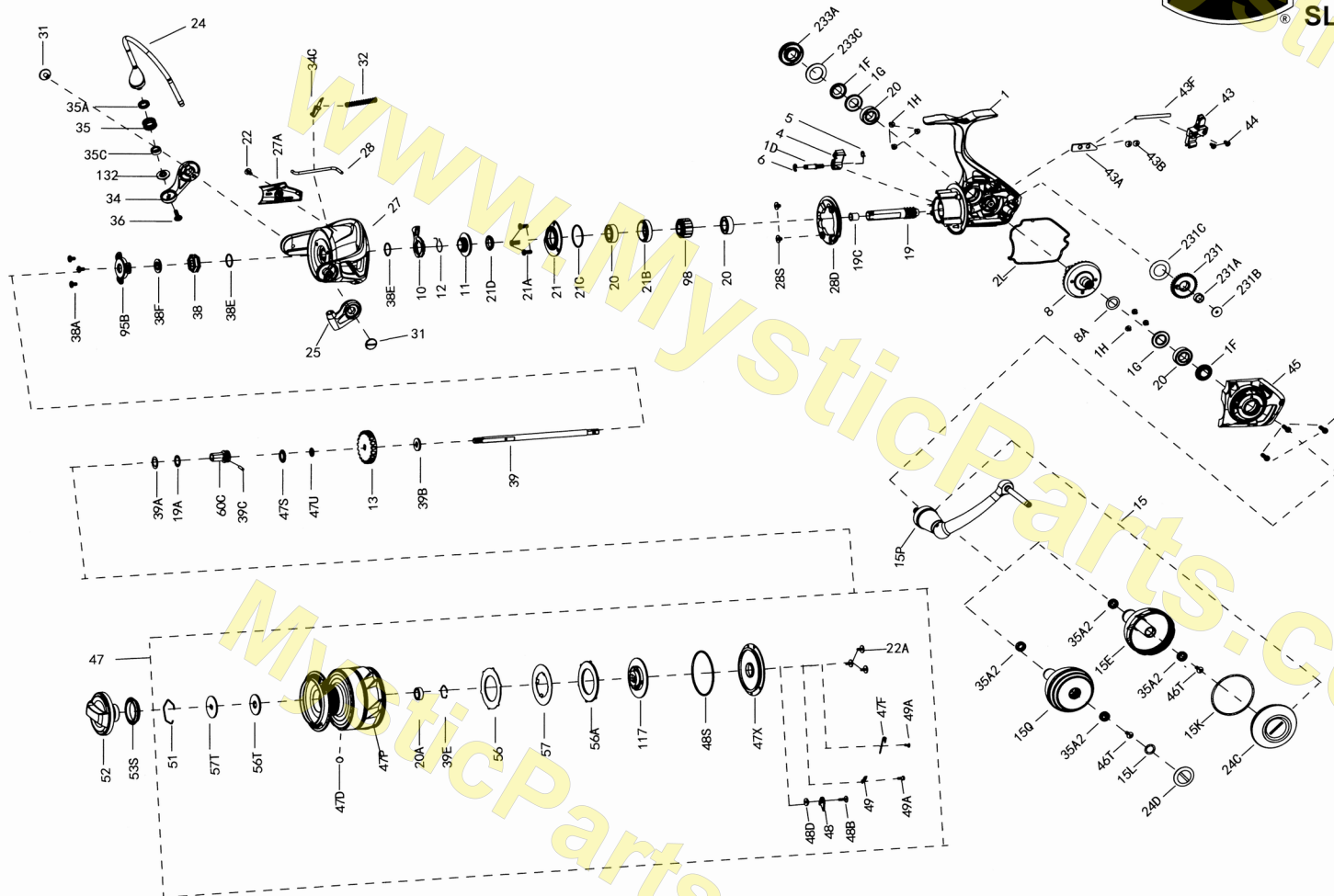




PARTS LIST FOR MODEL SLAMMERIV6500HS
SLAiv6500HS (1545767) (HIGH SPEED)

mysticparts.com
MYSTIC REEL PARTS
965 Radio Road
Little Egg Harbor, NJ 08087
+1 (609) 296-1300
www.mysticparts.com
customerservice@mysticparts.com

MRP Ver. 053122
(based on Penn's Rev. 01 4-21-21)



Penn Reel Parts list for Model: SLAiv6500HS (1545767) (HIGH SPEED) SLAMMER iv SPINNING

** MANUAL BAIL TRIP **

| KEY | PUREFISHING PART | | | DESCRIPTION | KEY | PUREFISHING PART | | | DESCRIPTION |
|------------|----------------------------------|------------------------|---|-------------|------------|------------------|------------------------|--|-------------|
| NO | NO | NO. | | | NO | NO | NO. | | |
| 1 | 1559336 | 1-SLAiv6500HS | BODY/HOUSING (HIGH SPEED) | | 39 | 1559324 | 39-SLAiv6500 | MAIN SHAFT | |
| 1D | 1277140 | 1D-SSV7500 | A/R PAWL POST | | 39A | 1559275 | 39A-SLAiv5500 | WASHER, FOR SPOOL SHAFT SLEEVE | |
| 1F | 1419019 | 1F-SLA5500 | BODY BALL BEARING SEAL (2 REQUIRED) | | 39B | 1277067 | 39B-SSV5500 | WASHER, FOR MAIN SHAFT BELOW CLICK GEAR | |
| 1G | 1419020 | 1G-SLA5500 | BODY SIDE SEAL LOCK PLATE (2 REQUIRED) | | 39C | 1559276 | 39C-SLAiv5500 | PIN | |
| 1H | 1418957 | 1H-SLA3500 | BODY SIDE SCREW (6 REQUIRED) | | 39E | 1559277 | 39E-SLAiv5500 | RETAINER | |
| 2L | 1419036 | 2L-SLA6500 | BODY SEAL | | 43 | 1419031 | 43-SLA6500 | OSCILLATION SLIDER (CROSSWIND BLOCK) | |
| 4 | 1389459 | 4-CLA6000 | A/R PAWL POST | | 43A | 1339536 | 43A-CLA5000 | OSCILLATION SLIDER GUIDE | |
| 5 | 1339474 | 5-CLA5000 | PAWL SPRING | | 43B | 1559161 | 43B-SLAiv2500 | SCREW, AT ROTOR COVER AND CROSSWIND PLATE (2 REQUIRED) | |
| 6 | 1277144 | 6-SSV7500 | RETAINER CLIP | | 43F | 1419029 | 43F-SLA6500 | GUIDE SHAFT | |
| 8 | 1447667 | 8-SLAiii6500HS | DRIVE GEAR (MAIN GEAR) (CNC) (HIGH SPEED) | | 44 | 1277072 | 44-SSV5500 | SCREW, FOR MAIN SHAFT | |
| 8A | 1277037 | 8A-SSV5500 | DRIVE GEAR SHIM WASHER | | 45 | 1559337 | 45-SLAiv6500HS | BODY COVER ASSEMBLY (HIGH SPEED) | |
| 10 | 1419936 | 10-CLA65000 | A/R PAWL HOLDER | | 46 | 1277074 | 46-SSV5500 | BODY COVER SCREW (3 REQUIRED) | |
| 11 | 1559262 | 11-SLAiv5500 | A/R BUSHING | | 47 | 1559340 | 47-SLAiv6500HS | SPOOL ASSEMBLY (HIGH SPEED) | |
| 12 | 1339487 | 12-CLA5000 | A/R BUSHING SPRING | | 47D | 1259574 | 10-7000AF | LINE HOOK | |
| 13 | 1419053 | 13-SLA5500 | CLICK GEAR | | 47F | 1419068 | 47F-SLA6500 | LINE CLIP RETAINER | |
| 19 | 1447672 | 19-SLAiii6500HS | PINION GEAR (CNC) (BRASS) (HIGH SPEED) | | 47P | 1559338 | 47P-SLAiv6500HS | SPOOL (BARE) (HIGH SPEED) | |
| 19A | 1277424 | 19A-SLA3500 | WASHER, AT PINION AND SPOOL SUPPORT SLEEVE (2 REQUIRED) | | 47S | 1559281 | 47S-SLAiv5500 | SPOOL SEAL | |
| 19C | 1419023 | 19C-SLA5500 | PINION GEAR BUSHING | | 47U | 1525247 | 47U-CLAi5500 | DRAG COVER SEAL | |
| 20 | 1308090 | 20-CFT5000 | BALL BEARING (4 REQUIRED) | | 47X | 1559282 | 47X-SLAiv5500 | DRAG COVER | |
| 20A | 1385530 | 20A-CLA3000 | SEALED BALL BEARING | | 48 | 1419069 | 48-SLA5500 | SPOOL CLICK PLATE | |
| 21 | 1559266 | 21-SLAiv5500 | BALL BEARING RETAINER | | 48B | 1419156 | 48B-SLA9500 | SPOOL CLICKER SPRING SCREW | |
| 21A | 1277154 | 21A-SSV7500 | PINION RETAINER SCREW (3 REQUIRED) | | 48D | 1385579 | 48D-CLA3000 | SPOOL CLICKER SPACER RING | |
| 21B | 1419024 | 21B-SLA5500 | PINION BALL BEARING COLLAR | | 48S | 1276958 | 48S-SSV3500 | SEAL, FOR DRAG COVER | |
| 21C | 1385684 | 21C-CLA8000 | O-RING | | 49 | 1385580 | 49-CLA3000 | SPRING | |
| 21D | 1559267 | 21D-SLAiv5500 | SEAL | | 49A | 1559283 | 49A-SLAiv5500 | SCREW (2 REQUIRED) | |
| 22 | 1276928 | 22-SSV3500 | ROTOR COVER SCREW | | 51 | 1277085 | 51-SSV5500 | DRAG WASTER RETAINER | |
| 22A | 1496533 | 22A-SLA7500 | DRAG COVER SCREW (3 REQUIRED) | | 52 | 1559901 | 52-SLAiv6500HS | DRAG KNOB ASSEMBLY (HIGH SPEED) | |
| 24 | 1559322 | 24-SLAiv6500 | BAIL WIRE | | 53S | 1339555 | 53S-CLA5000 | DRAG KNOB SEAL | |
| 25 | 1339500 | 25-CLA5000 | BAIL HOLDER | | 56 | 1419060 | 56-SLA5500 | DRAG FRICTION WASHER | |
| 27 | 1559319 | 27-SLAiv6500 | ROTOR | | 56A | 1419062 | 56A-SLA5500 | DRAG FRICTION WASHER | |
| 27A | 1559321 | 27A-SLAiv6500 | ROTOR COVER | | 56T | 1277089 | 56T-SSV5500 | DRAG FRICTION WASHER | |
| 28 | 1559320 | 28-SLAiv6500 | ROTOR TRIP LEVER | | 57 | 1559285 | 57-SLAiv5500 | KEYED DRAG WASHER | |
| 28D | 1457402 | 28D-SLAiv65000HS | ROTOR BRAKE | | 57T | 1419058 | 57T-SLA5500 | KEYED DRAG WASHER | |
| 28S | 1339512 | 28S-CLA5000 | ROTOR BRAKE SCREW (2 REQUIRED) | | 60C | 1559286 | 60C-SLAiv5500 | SPOOL SUPPORT SLEEVE | |
| 31 | 1277055 | 31-SSV5500 | BAIL ARM SCREW (2 REQUIRED) | | 95B | 1419009 | 95B-SLA3500 | ROTOR NUT LOCKING PLATE | |
| 32 | 1389467 | 32-CLA6000 | BAIL SPRING | | 98 | 1277094 | 98-SSV5500 | CLUTCH/SLEEVE ASSEMBLY | |
| 34 | 1389468 | 34-CLA6000 | BAIL ARM | | 117 | 1559287 | 117-SLAiv5500 | DRAG DRIVE PLATE | |
| 34C | 1389469 | 34C-CLA6000 | PIVOT ARM | | 132 | 1559326 | 132-SLAiv6500 | LINE ROLLER COLLAR | |
| 35 | 1457403 | 35-SLAiii6500HS | LINE ROLLER | | 231 | 1389600 | 231-CLA6000 | OSCILLAION GEAR (CROSSWIND GEAR) | |
| 35A | 1457404 | 35A-SLAiii6500HS | LINE ROLLER BUSHING | | 231A | 1339566 | 231A-CLA5000 | OSCILLATION GEAR BUSHING | |
| 35C | 1559273 | 35C-SLAiv5500 | LINE ROLLER BALL BEARING | | 231B | 1525918 | 231B-CLAi5500 | OSCILLATION GEAR SCREW | |
| 36 | 1422399 | 36-SLA9500 | LINE ROLLER SCREW | | 231C | 1389603 | 231C-CLA6000 | OSCILLATION GEAR WASHER | |
| 38 | 1419051 | 38-SLA5500 | ROTOR NUT | | 233A | 1559288 | 233A-SLAiv5500 | HANDLE CAP | |
| 38A | SEE PROBLEMS FOUND PAGE 3 | | | | 233C | 1419076 | 233C-SLA5500 | HANDLE CAP WASHER | |
| 38E | 1418958 | 38E-SLA3500 | PINION GEAR SEAL | | | | | | |
| 38F | 1419052 | 38F-SLA5500 | ROTOR-MAIN SHAFT SEAL | | | | | | |

See Page 3 for all handle components

NOTE: MYSTIC REEL PARTS REVISION!

Many of www.mysticparts.com schematics include changes that were either

made by Penn, or errors found and corrected by our parts dept.

MRP Ver. 053122 (based on Penn's Rev. 01 4-21-21)

HANDLE ASSEMBLY AND COMPONENT INFO FOR THE TWO TYPES OF HANDLES

METAL KNOB HANDLE COMPONENTS

| KEY | PUREFISHING PART | | | DESCRIPTION |
|------|------------------|-----------------|--|---|
| NO | NO | NO | | |
| 15 | 1559341 | 15-SLAiv6500HS | | HANDLE ASSEMBLY (METAL KNOB) (HIGH SPEED) |
| 15E | 1559264 | 15E-SLAiv5500 | | HANDLE KNOB (METAL) |
| 15K | 1419073 | 15K-SLA5500 | | HANDLE KNOB CAP SEAL |
| 15P | 1422395 | 15P-SLA5500 | | SUB-HANDLE ASSEMBLY |
| 24C | 1559339 | 24C-SLAiv6500HS | | HANDLE KNOB CAP (FOR METAL KNOB) (HIGH SPEED) |
| 35A2 | 1377606 | 35A-BTLI8000LC | | KNOB BALL BEARING (2 REQUIRED) |
| 46T | 1277046 | 22-SSV5500 | | SCREW |

FOAM KNOB HANDLE COMPONENTS

| KEY | PUREFISHING PART | | | DESCRIPTION |
|------|------------------|----------------|--|--|
| NO | NO | NO | | |
| 15 | N/A | N/A | | FOAM HANDLE NOT AVAILABLE PRE-ASSEMBLED |
| 15Q | 1559265 | 15E-SLAiv5500 | | HANDLE KNOB (FOAM) |
| 15L | ?? | 15L-CLA5000 | | HANDLE KNOB SEAL (THICKER / LARGER) ** SEE NOTES BELOW! ** |
| 15P | 1422395 | 15P-SLA5500 | | SUB-HANDLE ASSEMBLY |
| 24D | 1417808 | 24C-CLA5000 | | HANDLE KNOB CAP (FOR FOAM KNOB) |
| 35A2 | 1377606 | 35A-BTLI8000LC | | KNOB BALL BEARING (2 REQUIRED) |
| 46T | 1277046 | 22-SSV5500 | | SCREW |

15L NOTES:

Penn's rev00 schematics list the 15L as 15L-cftii3000 on SLAiv SIZES 5500 THRU 6500HS (INCORRECT PART#)

15L-CFTii3000 are much smaller and thinner than the seal that was found on the 24C-CLA5000 caps during disassembly.

We could not identify an existing Penn number to match it to, so we have assigned the number as 15L-CLA5000 Seal (Thicker/Larger)

PROBLEMS FOUND AND CORRECTED

| | | | |
|-----|--------------------|-------------|--|
| 38A | 1126326 | 24-ORRA-S10 | SCREW (3 REQUIRED) ** INCORRECT PART NUMBER DO NOT USE |
| | 1277063 | 38A-SSV5500 | SCREW (3 REQUIRED) ** USE THIS PART |

REGULAR TO (HIGH SPEED) SLAiv6500 TO SLAiv6500HS CONVERSION AND VISA VERSA

USE THE BLUE PARTS AND NOTES marked "(HIGH SPEED)" FOR REFERENCE

NOTE: Full conversion if you want the reel to look and say it's the SLAiv6500HS is all of the blue text parts marked (HIGH SPEED)
 However, the differences between them is cosmetic EXCEPT FOR THE GEARING
 USE THE MAIN 8 AND PINION 19 (HIGH SPEED) PARTS