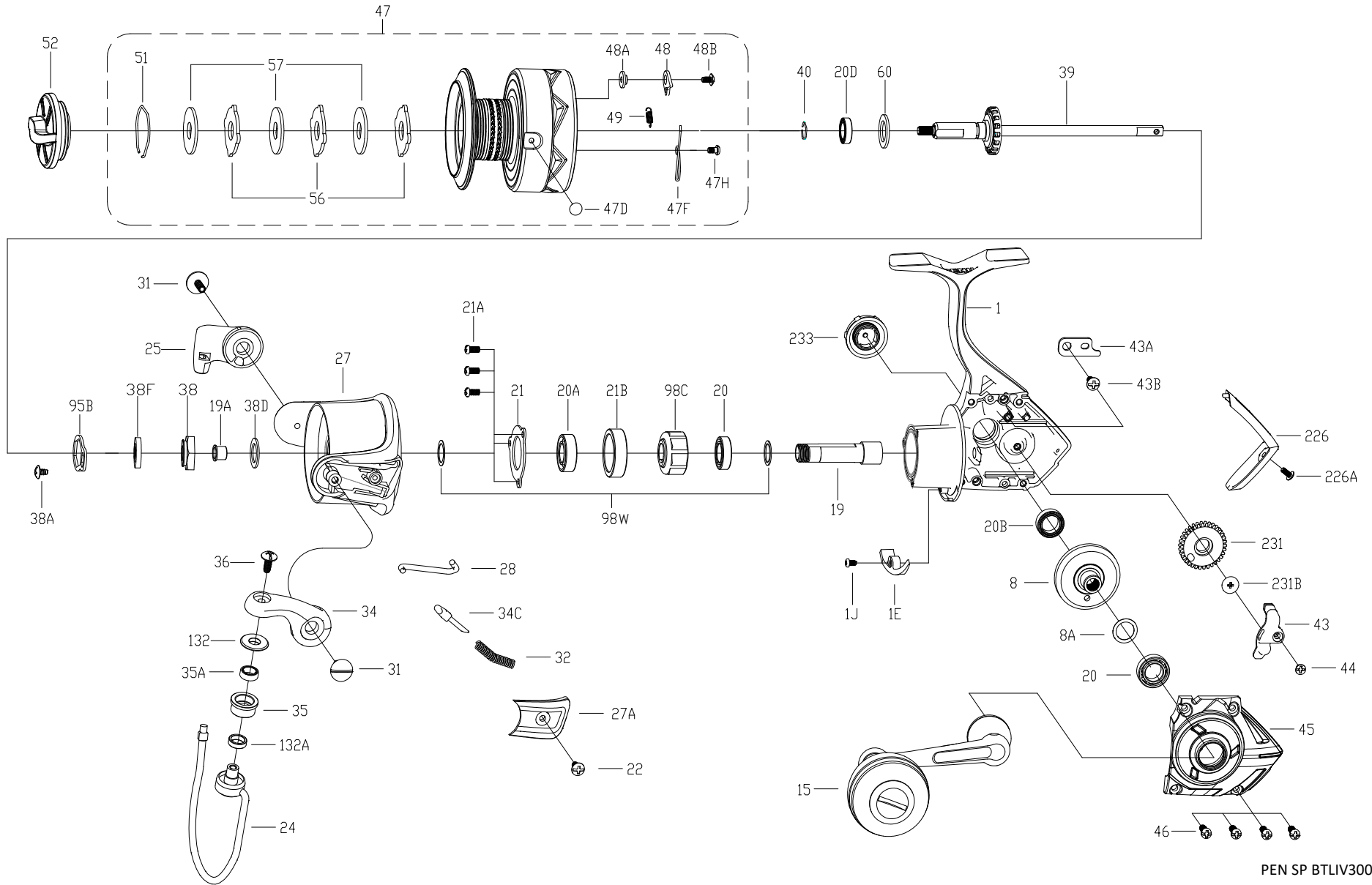




# BTLIV3000DX EXPLODED DRAWING





Thank you for your recent PENN gear purchase. No matter where you fish or what you fish for, you can depend PENN to perform in any battle day in and day out. Now it's time to get your product registered and get out on the water.

<https://register.pennfishing.com>

KEY NO.	PART NO.	PENN STYLE NO.	DESCRIPTION	KEY NO.	PART NO.	PENN STYLE NO.	DESCRIPTION	KEY NO.	PART NO.	PENN STYLE NO.	DESCRIPTION
1	1632380	1-BTLIV3000DX	Housing	31	1308063	31-CFT3000	Bail Arm Screw (2 req)	47F	1489218	47F-SSVI3500	Line Clip Spring
1E	1489173	1E-SSVI3500	Housing Slope	32	1191586	32-3000SG	Bail Spring	47H	1489219	47H-SSVI3500	Line Clip Spring Screw
1J	1489177	1J-SSVI3500	Housing Slope Screw	34	1540273	34-BTLIII3000DX	Bail Arm	48	1211604	48-3000SG	Click Tongue
8	1540340	8-BTLIII3000DX	Main Gear	34C	1489198	34C-SSVI3500	Pivot Arm	48A	1214226	48A-3000SG	Click Tongue Washer
8A	1191028	8A-3000SG	Shim	35	1489199	35-SSVI3500	Line Roller	48B	1489220	48B-SSVI3500	Spool Click Screw
15	1632219	15-BTLIV3000DX	Handle Assembly	35A	1489200	35A-SSVI3500	Roller Bearing	49	1211605	49-3000SG	Click Tongue Spring
19	1529183	19-BTLIII3000	Pinion Gear	36	1191699	36-3000SG	Bail Stud Screw	51	1308078	51-CFT3000	Drag Retaining Ring
19A	1191252	19A-3000SG	Pinion Bushing	38	1632370	38-BTLIV3000	Rotor Nut	52	1540348	52-BTLIII3000DX	Drag Knob Assembly
20	1308050	20-CFT3000	Ball Bearing (2 req)	38A	1308069	38A-CFT3000	Rotor Locking Plate Screw	56	1308080	56-CFT3000	Drag Washer (3 req)
20A	1308051	20A-CFT3000	Upper Pinion Ball Bearing	38D	1308070	38D-CFT3000	Rotor Nut Washer	57	1192043	57-3000SG	Keyed Washer (3 req)
20B	1211610	20D-5000BTL	Housing Ball Bearing	38F	1632375	38F-BTLIV3000	Main Shaft Seal Ring	60	1192060	60-3000SG	Thrust Washer
20D	1211588	20D-3000BTL	Spool Ball Bearing	39	1540345	39-BTLIII3000DX	Main Shaft Assembly	95B	1308081	95B-CFT3000	Rotor Locking Plate
21	1308052	21-CFT3000	Bearing Retainer	40	1308073	40-CFT3000	Bearing Lock Spring	98C	1308082	98C-CFT3000	Clutch/Sleeve Assembly
21A	1192644	21A-3000SG	Retainer Screw (3 req)	43	1485219	43-PURIII3000	Crosswind Block	98W	1204004	98W-3000PUR	Clutch Washer (2 req)
21B	1308053	21B-CFT3000	Collar	43A	1191818	43A-3000SG	Crosswind Block Plate	132	1529384	132-BTLIII3000	Roller Washer
22	1203997	43B-3000PUR	Bail Pivot Cover Screw	43B	1489213	43B-SSVI3500	Plate Screw	132A	1489225	132A-SSVI3500	Line Roller Bushing
24	1529184	24-BTLIII3000	Bail Wire Assembly	44	1191843	44-3000SG	Crosswind Block Screw	226	1632381	226-BTLIV3000DX	Rear Cover
25	1540342	25-BTLIII3000DX	Bail Holder	45	1632220	45-BTLIV3000DX	Housing Cover	226A	1529386	226A-BTLIII3000	Rear Cover Screw
27	1540343	27-BTLIII3000DX	Rotor	46	1192645	21A-5000SG	Cover Screw (4 req)	231	1485217	231-PURIII3000	Crosswind Gear
27A	1540344	27A-BTLIII3000DX	Bail Pivot Cover	47	1632221	47-BTLIV3000DX	Spool Assembly	231B	1489230	231B-SSVI3500	Crosswind Gear Screw
28	1529188	28-BTLIII3000	Trip Lever	47D	1489217	47D-SSVI3500	Line Clip	233	1632346	233-BTLIV1000	Bearing Cover Assy